



六十年金牌品质 新世纪再创辉煌



公司总部位坐落于享誉海内外的客家祖地和著名侨区一龙岩市、也是中国著名革命老区和中央苏区，拥有“永定土楼”世界文化遗产、“古田会议会址”、“冠豸山”世界自然遗产等红色文化之乡（总部距厦门126公里、车程1小时左右）。



企业官网



微信公众号

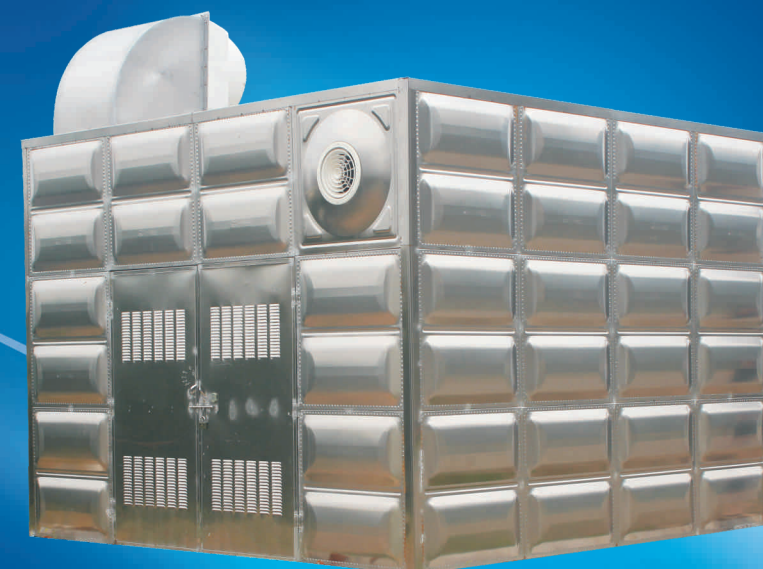
福建省龙岩市九龙水泵制造有限公司

Fujian Longyan Jiulong Water Pump Manufacturing Co., Ltd

地址: 龙岩市经济技术开发区 邮编/P.C.: 364000
ADD: Longxing road, Area of Economic & Technique Development, longyan city.
电话/TEL: 0597-2797558 2293709 传真/FAX: 0597-2797556
网址/WEBSITE: www.jlpump.cn 邮箱/E-mail: jlsb@jlpump.cn



大模块不锈钢水箱



ISO9001:2000质量体系认证 煤安认证 CCCF认证 卫生许可证

福建省龙岩市九龙水泵制造有限公司

Fujian Longyan Jiulong Water Pump Manufacturing Co., Ltd
(原福建省龙岩水泵厂)

公司简介 INTRODUCTION

■ 关于九龙

龙岩市九龙水泵制造有限公司是具有**60余年水泵生产经验的福建龙岩水泵厂(国家二级企业)**改制组建的泵业公司,产品继承“龙水”牌商标。公司总厂房建筑面积达6万多平方米,拥有达到国家B级精度标准的大型水泵试验台,是福建省最大的专业水泵制造企业。

公司下属两个子公司——福建龙泵机械科技有限公司和龙岩市九龙智电科技有限公司,是集产品铸造、机械加工、总装测试、电控系统生产为一体的高科技企业!

福建龙泵机械科技有限公司位于龙岩市龙雁开发区,占地面积达3万多平方米。公司专业生产不锈钢、灰铁、球墨铸铁等材质铸件,运用现代化的设备进行砂处理、造型、浇铸,同时拥有光谱分析仪等各种先进的检测设备,确保生产出高品质的铸件。

龙岩市九龙智电科技有限公司是以水泵智能控制,节能运行为主导的电控系统研发生产及高低压成套设备生产的企业。

总公司设有与龙岩闽西技术学院合作的开发水泵新产品的研究所,与江苏理工大学,北京巡航高科技有限公司等国内科研院校建立了长期合作关系,为国内外客户开发水泵产品。

公司坚持质量第一,服务至上的经营理念为客户提供优质的产品,欢迎新老客户选择我们的产品

■ 九龙的产品

请认准我们的商标“龙水”牌。  (原商标) →  (新商标)

主要产品有: D、DG、DF、MD、PD、PMD、GC卧式多级离心泵; Y、AY、IH、IHF 石油化工泵; IS、IR、ISG、IRG、CNFL、CNGL清水离心泵; S(SH)、CS中开式离心泵; XBD-L、XBD-DL、XBD-DLG、XBD-LG、XBD-D、XBD-IS系列消防泵; LSBS、LSWS、LSXS、LSES系列智能成套供水设备; WQ、JYWQ、LSWT系列污水泵等; 公司泵类产品多达二十几个系列近两千个型号,广泛应用在矿山排水、冶金、石油化工、电力、造纸、市政府建筑等行业。



关于产品 About product

模块化装配式不锈钢水箱是目前国内新型卫生环保的储水设备。与传统水箱相比,具有永不生锈、不生青苔、不漏水、清洁卫生、使用寿命长、性价比高、组装方便、冷热兼用、易于保湿等一系列优点,是传统给水工艺、材料形式上的重大突破,是水泥水箱、玻璃钢水箱理想替代品。

九龙水泵制造有限公司在长期生产加工水箱经验基础上,研制开发了环保模块化装配式不锈钢水箱。水箱选用进口食品级不锈钢材料,模压成里,规格不同。单板(规格: 1 m * 1 m、1 m * 0.5 m、0.5 m * 0.5 m)(本公司冲压面板球冠深度达 80 mm,)比一般普通厂家深 30 - 40 mm,冲压板的承压能力是普通平板的(3 - 4倍),内部用不锈钢骨架拉筋结构加强水箱承压能力,配以各种不锈钢材质附件,底架镀锌槽钢,采用氩弧焊工艺现场组装焊接而成一个结构强度较高的完美整体水箱。无需大型吊装设备,运输便捷。公司也可以根据用户的需求量身定制,组装成不同形状、不同体积的不锈钢水箱,适用性和实用性强,给设计和施工带来便捷,与整体建筑布局相得益彰。公司生产的模块化装配式不锈钢水箱,以其稳定可靠的质量,诚信优质的服务得到广大用户的赞誉。目前企业致力于开发各类高新产品。竭诚欢迎与各界朋友进行广泛合作,我们愿以真诚的服务,给你一个放心、安心、舒心的产品和服务。

适用场合 Application

a.建筑给水的调节水箱,消防水箱,贮存水箱,采暖及热水供应系统的膨胀水箱,凝结水箱,混凝土内贴不锈钢水箱。在建筑施工、道路施工、地址勘察及国防工程等临时储水箱。

b.石油、化工、食品、制药、冶金等行业酸碱存储槽、油槽、锅炉行业的补充水箱,保温水箱。

c.水处理行业的原水箱、净水箱,环保行业的污水处理槽等。

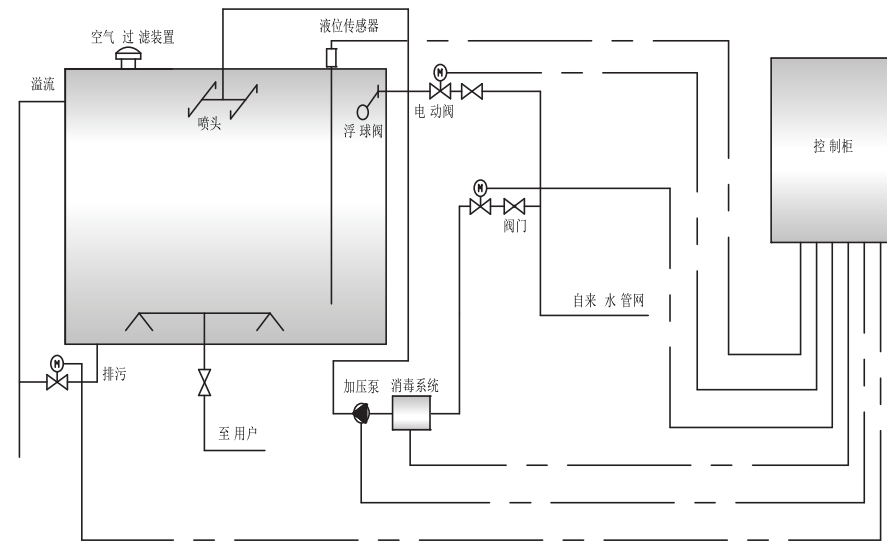


Modular assembly type stainless steel tank is a new type of water storage equipment. Compared with the traditional water tank, have never rust, not living moss, do not leak, clean sanitation, long service life, high cost performance, convenient assembly, hot and cold combination, easy to moisture and a series of advantages, is a major breakthrough in the form of the traditional water supply technology, materials, it is an ideal substitute of cement, glass fiber reinforced plastic water tank. Based on the experience of long-term production and processing water tank, Kowloon water pump manufacturing co., LTD. Has developed and developed the environment-friendly modular assembly type stainless steel tank. The water tank is made of imported food grade stainless steel material with different specifications. Single board (specification: 1 m * 1 m, 1 m * 0.5 m, 0.5 m * 0.5 m) (the company stamping surface depth of 80 mm, cricket) than ordinary factory 30-40 mm deep, drawing pressure ability is ordinary tablets (3-4 times), internal strengthen water tank with stainless steel frame brace structure bearing capacity, with all kinds of stainless steel accessories, chassis, galvanized channel steel, welding assembly at the scene, using chlorine arc welding technology with a high strength perfect whole tank structure. No large hoisting equipment, convenient transportation. Company can also be customized according to user's demand, assembled into different shape and size of stainless steel water tank, applicability and practicability is strong, brings to the design and construction is convenient, and the overall architectural layout. The modular assembly stainless steel cistern produced by the company, with its stable and reliable quality, good quality and good service has been praised by the majority of users. At present, enterprises are committed to developing all kinds of high-tech products. We sincerely welcome to cooperate with friends from all walks of life. We are willing to give you a sincere service and a reassuring, reassuring and comfortable product and service.



Modular assembly type stainless steel tank is a new type of water storage equipment. Compared with the traditional water tank, have never rust, not living moss, do not leak, clean sanitation, long service life, high cost performance, convenient assembly, hot and cold combination, easy to moisture and a series of advantages, is a major breakthrough in the form of the traditional water supply technology, materials, it is an ideal substitute of cement, glass fiber reinforced plastic water tank. Based on the experience of long-term production and processing water tank, Kowloon water pump manufacturing co., LTD. Has developed and developed the environment-friendly modular assembly type stainless steel tank. The water tank is made of imported food grade stainless steel material with different specifications. Single board (specification: 1 m * 1 m, 1 m * 0.5 m, 0.5 m * 0.5 m) (the company stamping surface depth of 80 mm, cricket) than ordinary factory 30-40 mm deep, drawing pressure ability is ordinary tablets (3-4 times), internal strengthen water tank with .

性能优点 Features



LS全自能水箱基本组成及控制原理

一、自动化程度高 High degree of automation

控制电路采用进口可编程控制器(PIC)和数字控制面板, 整个系统可完成自动进水、自动排水、低水位时清洗或定时清洗和消毒, 而达到全自动控制功能。

Control circuit adopts imported programmable controller (PIC) and digital control panel, the system can complete the automatic feed, automatic drainage, low water level when cleaning or regular cleaning and disinfection, and achieve automatic control function.

二、卫生性强 Is good for health

水箱采用密封式人孔, 水箱安装空气过滤装置, 杜绝了空气中的灰尘进入水箱。

The water tank USES the sealed manhole, the water tank installation air filtration device, eliminates the dust in the air into the water tank

三、高效低能耗 High efficiency and low energy consumption

五个设计精巧、不同方向的喷嘴同时工作, 喷射力强、效率高; 正常20T水箱清洗一次耗水量不足1吨, 耗电量不足1度。

The five different orientations of the nozzle at the same time work, the jet force is strong, the efficiency is high; The normal 20T water tank can clean a water consumption of less than 1 ton, and consumes less than 1 degree.

四、安全性高 High safety

水箱安装液位传感器和溢流装置, 当进水浮球阀失效时, 溢流信号发出, 进水电动阀关闭, 起到双重保护。

The tank is equipped with liquid level sensor and overflow device. When the inlet valve fails, the overflow signal is issued and the inlet valve is closed for double protection.

五、消毒效果好 Is good for health

水箱安装液位传感器和溢流装置, 当进水浮球阀失效时, 溢流信号发出, 进水电动阀关闭, 起到双重保护。

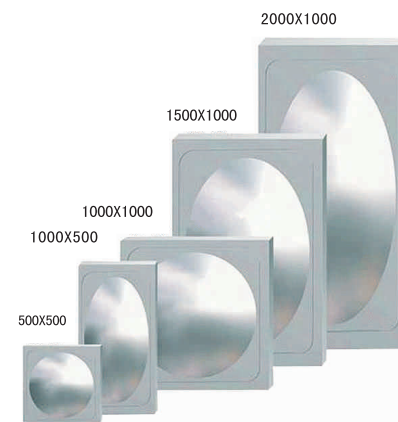
The tank is equipped with liquid level sensor and overflow device. When the inlet valve fails, the overflow signal is issued and the inlet valve is closed for double protection.

六、清洗全方位 Clean all directions

可对水箱(池)内壁进行三维空间无死角的扫描清洗、消毒。整个清洗过程只需二十分钟左右, 不需长时间停水。

It can be used to clean and disinfect the inner wall of water tank (pool) without dead Angle. The whole cleaning process takes about 20 minutes, and it doesn't take long to stop the water.

不锈钢水箱的设计使用说明 The explanation of design



1、制造标准 Aanufacture standard

国家建筑标准设计图集12S101

No rust national building standard design atlas 12S101

2、选用材质 Material

SUS304、SUS316L、SUS444。

3、适用范围 Application

各类工业、民用建筑给水、暖通、消防系统、食品、饮料、造酒、水处理行业、医药、石油、化工行业。

All kinds of industrial, civil buildings water supply, hvac, fire fighting system, food, beverage, wine making, water treatment industry, medicine, petroleum, chemical industry.

4、水箱附件 Accessories

进水管(配浮球阀)、出水管、溢流管、排污管、透气管、人孔、内外扶梯、镀锌槽钢。水箱的进出口水管径、方位、和链接形式及用户若有特殊要求可在合同附件中说明。

Inlet pipe (with float ball valve), outlet pipe, overflow pipe, drain pipe, vent tube, manhole, inner and outer escalator, galvanized channel steel. The water pipe diameter, bearing and link form of the water tank and user's special requirements can be explained in the attachment of the contract.

7、特别说明 Specialnote

水箱水质应符合GB/T 9729-2007《氯化物测定通用方法》要求, 特别应严格控制水中氯离子含量不超过25mg/L, 以防止水箱内部产生点腐蚀、应力腐蚀、缝隙腐蚀等局部腐蚀后引起水箱损坏。同时在海水环境或临海地区强烈要求建议用SUS316L或SUS444材料。

Water tank water quality should comply with the GB/T 9729-2007 "chloride use-general method" requirement, especially should strictly control the content of chloride ion in water less than 25 mg/L, in order to prevent the water tank internal corrosion, stress corrosion, crevice corrosion and other local corrosion caused by water damage. SUS316L or SUS444 is strongly recommended in seawater environment or in coastal areas.

5、水箱施工 Assembly

由专业焊工现场采用钨极氩气保护焊接, 水箱的四周应有不小于500mm的检查空间, 水箱顶至屋顶应有不小于400mm的空间, 并确保施工现场整洁干净, 水箱保温可根据用户具有要求整体覆盖保温。

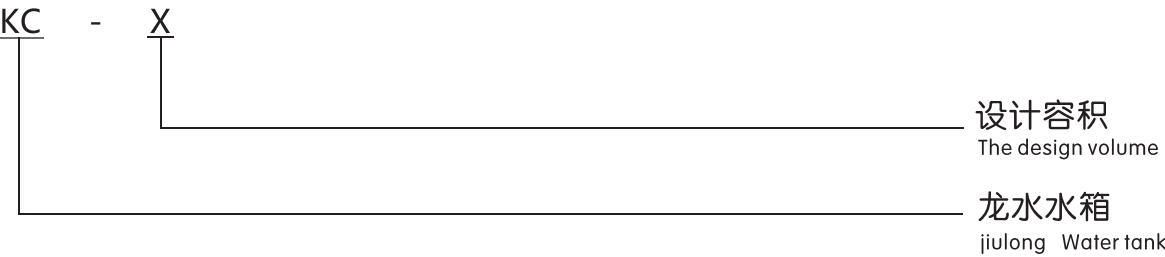
By professional welder site USES the tungsten electrode argon gas protection welding, the sides of the tank should be not less than 500 mm, check the tank roof and the roof should be not less than 400 mm of space, and to ensure the construction site neat and clean, the tank cover insulation heat preservation can be in accordance with the requirements of users have overall.

6、水箱验收 Inspection and acceptance

关闭出水口、排污口、打开进水阀门, 待水箱成满水后, 3小时无渗漏、无异常声及变形为合格。

Close the outlet, drain and open the water inlet valve. After the water tank is filled with water, there will be no leakage, abnormal sound and deformation for 3 hours.

型号意义 Model significance



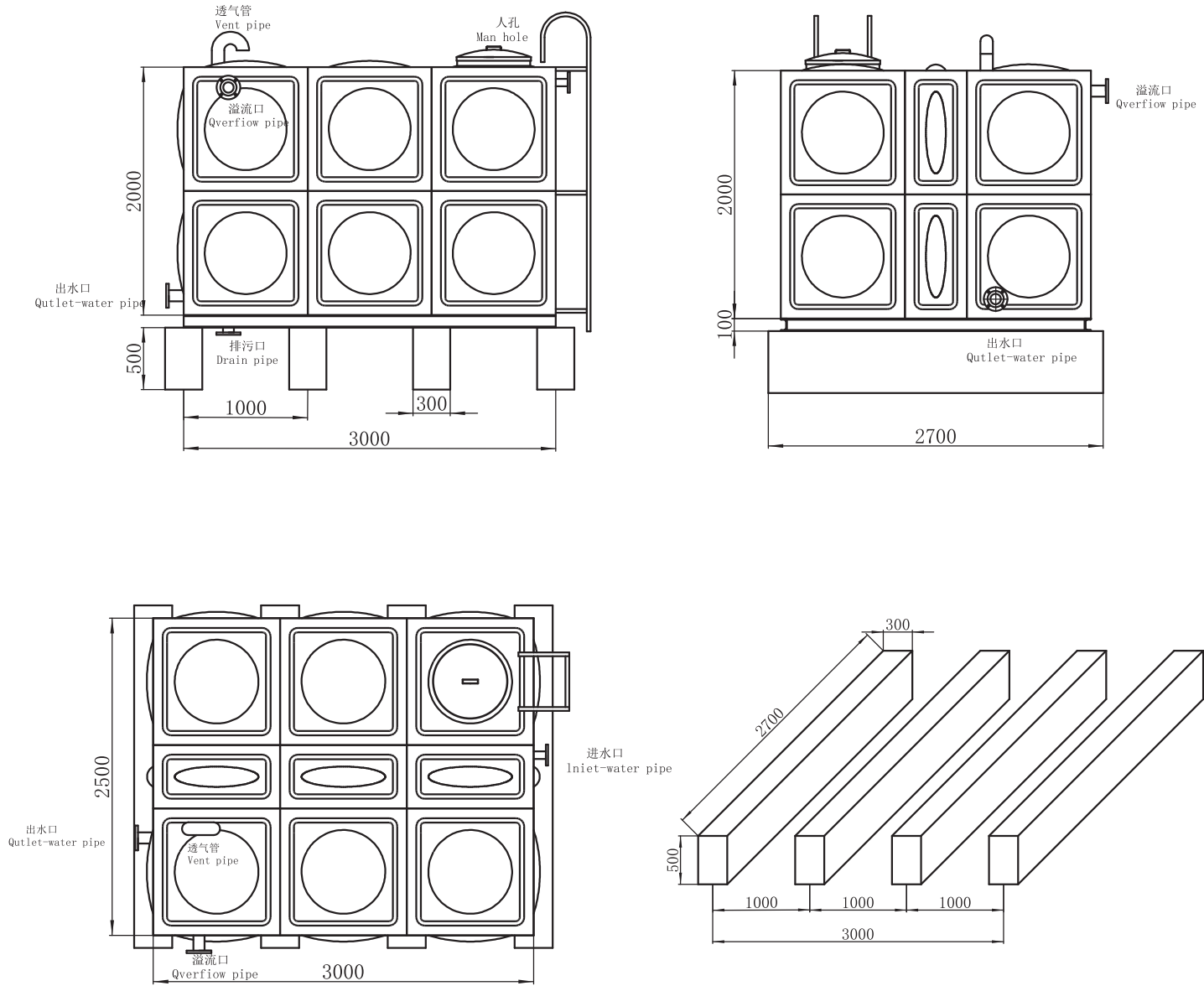
装配式不锈钢焊接水箱选型指南 The guide to type selection

型号 Model	外形尺寸 Dimensions			容积 Cubage m³	顶板 Roof plate mm	底板 bottom plate mm	侧一 Side 1 mm	侧二 Side 2 mm	侧三 Side 3 mm	底架槽钢 Chassis channel steel
	L (m)	W (m)	H (m)							
JL-2	2	1	1	2	1.0	1.2	1.0			8#
JL-6	2	2	1.5	6	1.0	1.5	1.5	1.2		8#
JL-10	2.5	2	2	10	1.0	1.5	1.5	1.2		8#
JL-20	5	2	2	20	1.0	1.5	1.5	1.2		8#
JL-30	5	3	2	30	1.0	1.5	1.5	1.2		8#
JL-40	5	4	2	40	1.0	1.5	1.5	1.2		8#
JL-50	5	5	2	50	1.0	1.5	1.5	1.2		8#
JL-60	6	5	2	60	1.0	1.5	1.5	1.2		8#
JL-70	7	5	2	70	1.0	1.5	1.5	1.2		8#
JL-80	8	5	2	80	1.0	1.5	1.5	1.2		8#
JL-10	2	2	2.5	10	1.0	2.0	2.0	1.5	1.2	8#
JL-20	4	2	2.5	20	1.0	2.0	2.0	1.5	1.2	8#
JL-30	6	2	2.5	30	1.0	2.0	2.0	1.5	1.2	8#
JL-40	4	4	2.5	40	1.0	2.0	2.0	1.5	1.2	8#
JL-60	8	3	2.5	60	1.0	2.0	2.0	1.5	1.2	8#
JL-70	7	4	2.5	70	1.0	2.0	2.0	1.5	1.2	8#
JL-80	8	4	2.5	80	1.0	2.0	2.0	1.5	1.2	8#
JL-90	6	5	3	90	1.0	2.0	2.0	1.5	1.2	8#
JL-105	7	5	3	105	1.0	2.0	2.0	1.5	1.2	8#
JL-120	8	5	3	120	1.0	2.0	2.0	1.5	1.2	8#
JL-144	8	6	3	144	1.0	2.0	2.0	1.5	1.2	8#
JL-168	8	7	3	168	1.0	2.0	2.0	1.5	1.2	8#
JL-189	9	7	3	189	1.0	2.0	2.0	1.5	1.2	8#
JL-240	10	8	3	240	1.0	2.0	2.0	1.5	1.2	8#

注：1、用户根据实际需要自由选择水箱尺寸，按照1000mm*1000mm,1000mm*500mm,500mm*500mm。
2、若需按国家水箱标准厚度，水箱2m高的厚度为底板2.5mm，侧一1.5mm。水箱3m高的厚度为底板3.0mm，侧一2.5mm，侧二2.0mm，侧三1.5mm，顶板1.5mm。

Note: 1. The user shall freely select the size of the water tank according to the actual needs, according to 1000mm*1000mm,1000mm*500mm,500 mm * 500 mm.
2. According to the standard thickness of the state water tank, the thickness of the water tank is 2.5mm and the side is 1.5mm. Water tankThe thickness of 3m is 3.0mm, side a 2.5mm, side 2 2.0 mm, side 3 1.5mm, and 1.5mm roof.

产品结构示意图 Sturcture Diagram



水箱混凝土基础图
The plan viaw of concrefe tod

装配式不锈钢水箱应用材料的耐腐蚀性能 Corrosion resistance of assembly type stainless steel tank

奥氏体不锈钢 Austenitic stainless steel

制作水箱的不锈钢材料除我国00Cr18Mo2和日本SUS444之外，其他都是奥氏体不锈钢，这类不锈钢具有很高的韧性（延伸率大于40%），冷加工焊接性能很好。

Making water tank stainless steel materials except SUS444 00Cr18Mo2 in China and Japan, the rest are all austenitic stainless steel, this type of stainless steel with high toughness (elongation is more than 40%), cold welding performance is very good.

铁素体不锈钢 Ferritic stainless steel

中国00Cr18Mo2和日本SUS444材料为铁素不锈钢，是一种含有铬18%，并具有一定铝含量。且碳、氮很低的高纯铁素体不锈钢。该钢种具有优异的抗应力腐蚀、耐氯离子点腐蚀和高温抗氧化性能特点，特别适用于不锈钢水箱的材料。

The Chinese 00Cr18Mo2 and Japanese SUS444 materials are ferritic stainless steel, which is a kind of chromium 18% and has certain aluminum content. Carbon and nitrogen are very low high purity ferrite stainless steel. The steel has excellent anti-stress corrosion, chloride ion point corrosion and high temperature oxidation resistance, especially for stainless steel tank.

奥氏体、铁素体不锈钢材料的耐腐蚀性能 Corrosion resistance of austenitic and ferritic stainless steel materials

无论奥氏体还是铁素不锈钢材料在大气中、淡水中耐腐蚀性都比较好，其耐腐蚀性能差别主要取决于耐晶间腐蚀、点腐蚀、均匀腐蚀和应力腐蚀的能力。

Whether the austenitic or ferritic stainless steel materials are resistant to corrosion in the atmosphere and in fresh water, the corrosion resistance performance is mainly determined by the corrosion, corrosion and uniform corrosion

结论 Conclusion

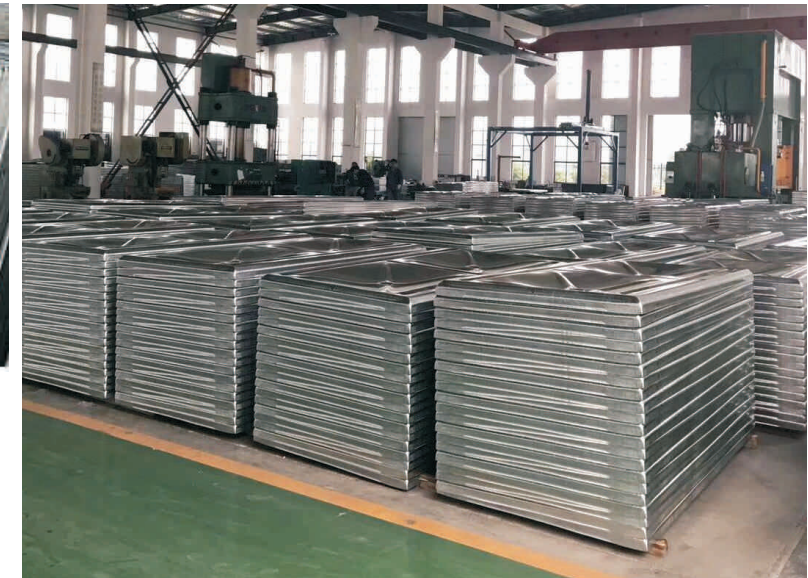
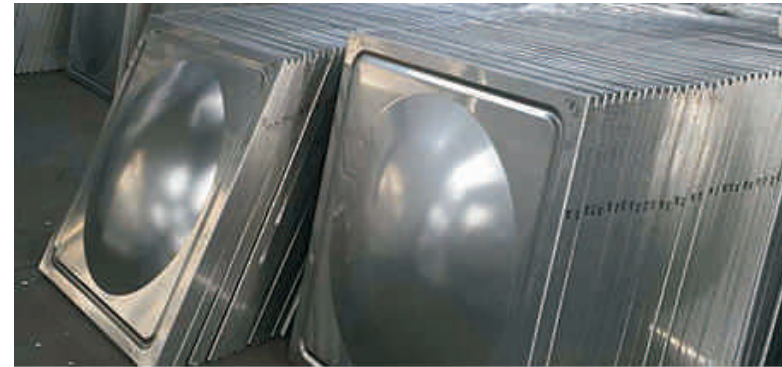
本厂选用食品级SUS444 304不锈钢板，在自来水介质中耐腐蚀性强，永不生锈，永久保证水质清洁，一般场合下均可选用SUS316L材料耐晶间耐腐蚀、均匀腐蚀、点腐蚀及在自来水介质中耐腐蚀比SUS444优异；SUS444材料应力耐腐蚀比SUS316L优异；应力腐蚀必须在特定的介质、环境中才会产生。一般介质无需选用SUS316及SUS444材料。但在海水环境或临海地区强烈建议用SUS316或SUS444材料。

We use food grade SUS444 stainless steel plate, 304 in tap water medium corrosion resistance is strong, never rust, life-time guarantee clean water quality, all can choose general situation of SUS316L material resistant to intergranular corrosion resistance, uniform corrosion, pitting corrosion and corrosion resistance in tap water medium than SUS444 is excellent; SUS444 material stress corrosion resistance is better than SUS316L; Stress corrosion must be produced in a specific medium and environment. SUS316 and SUS444 materials are not used in the general media. However, SUS316 or SUS444 is strongly recommended in seawater environment or in coastal areas.

装配式不锈钢焊接水箱选型指南 The guide to type selection

钢种 Steel grade	成份 Content	C	Si	Mn	Ni	Cr	Mo
SUS304		≤0.08	≤1.00	≤2.00	8-20	18-20	-
SUS316L		≤0.08	≤1.00	≤2.00	16-18	16-18	2.0-3.0
SUS444		≤0.025	≤1.00	≤1.00	≤0.06	17-20	1.75-2.5

安装流程 The installation process



工程案例 Engineering case



工程案例 Engineering case



订货说明 Ordering instructions

- 1、企业提供的水箱进出口及其他管径，是按公司企业标准所定，如果用户有特殊要求，请在合同中著名或提供相关确认的有效图纸。
- 2、水箱所配遥控浮球装置及其他需增设的附件，根据设计要求均由用户自行配置。
- 3、如水箱需保温，保温材料采用橡塑板、外加彩钢板或不锈钢薄板包装，价格另计。

1. The import and export of water tanks provided by enterprises and other pipe diameters shall be determined according to the company standards. If the user has special requirements, please be famous or provide relevant valid drawings in the contract.
2. The water tank shall be equipped with the remote control float device and other accessories that need to be added. According to the design requirements, the users shall configure their own devices.
3. If the water tank needs to be insulated, the insulation material shall be rubber and plastic plate, plus color plate or stainless steel sheet packing, and the price will be different.

资质证书 Qualification certificate

